

CITI Program

ACHRI & UAMS Start Date
September 4, 2007



What is the CITI Program?

- Collaborative Institutional Training Initiative (CITI)
- CITI is a volunteer organization
- University of Miami
- CITI maintains an educational website—www.citiprogram.org
- Participating organizations can design and roll out a customized curriculum for their investigators, students staff and administrators.

CITI Program

- Human Subjects Protection
 - 781 institutions including VA
 - >600,000 users since 9-2000
 - Biomedical Modules
 - Social & Behavioral Modules
 - General Interest modules
 - Biomedical Refresher
 - Social & Behavioral Refresher






Participant Demographics

<u>Category</u>	<u>Number</u>	<u>Percentage</u>
Academia	298	36%
VA	147	20%
Medical Centers	127	16%
Government Non - VA	57	8%
Healthcare	54	7%
Research institutes	37	5%
International	27	3%
Industry / IRB	34	5%
	<hr/> 781	<hr/> 100%




CITI — Program Review

- **The CITI Content is extensively reviewed and critiqued.**
 - CITI Developers (~50)
 - CITI Editorial Board (~15)
 - External peer reviewers
 - Professional editorial services (LERA Group, PTC of NY)
 - The learners via user satisfaction surveys
 - Quiz questions
 - Recommendations for new course content



CITI - The Content is customized/institution

- CITI Basic Course www.citiprogram.org
- CITI Refresher Course www.citiprogram.org
- CITI International Research Course www.irbtraining.org
- Good Clinical Practice (GCP)
- Responsible Conduct of Research



CITI Program

The Participating Institution:

- **Established Learner Groups**
 - Biomedical Research Investigators
 - Social & Behavioral Research Investigators
 - Incidental Research Contact & Students
 - IRB Members
 - Students conducting no more than minimal risk research
 - Reference Resource
- **Designed a specific curriculum for each Learner Group**
 - Required and optional Modules
 - Set passing score (100%)
 - Set recertification requirement timeline. (2 Years)
 - Included Hipaa in all modules
- **Provided additional organization specific instructional materials.**
 - The Institutional Module – The same at ACHRI & UAMS

CITI Program The Learner:

www.citiprogram.org

Registers

Username & Password

Affiliation: Chooses Both UAMS & ACHRI

Chooses Learner Group

Completes the Required modules
Multiple sessions

Prints / Saves
Completion Report

Completes any Optional modules

CME / CEU

Institutional Trainer

Refresher Notification


Database
Archive

Log Off

CITI “Help Desk”

- Resolve learner problems
 - Registrations
 - Technical Issues
 - 305 243-7970
 - citisupport@med.miami.edu
- Help on Our Campuses
 - Margie Brackeen (ACHRI)
 - 364-3586
 - Crystal Hunnicutt (UAMS)
 - 526-6879
 - IRB 686-5667



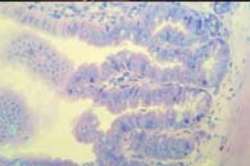


International Human Subject Research

- US Regulations regarding training pertain to international collaborators on NIH funded projects.
- CITI International www.irbtraining.org
 - Spanish
 - French
 - Portuguese
 - Chinese
 - Arabic
- Used by foreign investigators collaborating on NIH funded projects.

CITI's International Program

- New Emerging International Collaborations
 - Africa – Nigeria
 - Canada
 - Japan
 - Russia





Future Plans

- Lab Animal Welfare
 - Course Update and Refresher Course
- RCR
 - Promote the RCR program
 - RCR for Engineers.
 - RCR for Science administrators.
- BioSafety and Biosecurity Course.
- Human Subjects
 - IRB Coordinators
 - Stem Cell Research
 - Clinical Trials
 - Informational website for human subjects.

Register

CITI Home Page - Microsoft Internet Explorer

File Edit View Favorites Tools Help

Back Search Favorites

Address <http://www.citiprogram.org/> Go Links

Google Go RS Bookmarks 98 blocked Check AutoLink AutoFill Settings

CITI Collaborative Institutional Training Initiative

Forgot username or password?

How do I use the new **Lab Animal Course**?

See how your institution can become a CITI participant

Welcome

CITI Login and Registration Page

i The CITI Program is a subscription service providing ethics education to all members of the research community. To participate fully, learners must be affiliated with a CITI participating organization.

The CITI course is a protected site. If you are a new learner at a participating organization you must register to create your own username and password and gain access to the site.

i **New Users** [Register Here](#)

i **Already Registered?** [Login Below](#)

Username

Password

[Forgot username or password?](#)

[Announcements and FAQ](#)

Affiliate

CITI Collaborative Institutional Training Initiative

Select your institution or organization

Choose your institution from the appropriate dropdown menu then click **SUBMIT**. If you are affiliated with more than one institution, you will be able to select additional institutions after providing the information required.

Participating Institutions:

Veterans Affairs:

Department of Energy:

HIV/AIDS Network Coordination (HANC):

[Home](#) | [CME/CEU](#) | [Copyright and Disclaimer](#) | [About Us](#) | [Acknowledgements](#) | [Contact Us](#)

Pick a Username & Password

CITI Collaborative Institutional Training Initiative

Select Your Username and Password

Your username should consist of 4 to 50 characters. Acceptable characters include letters, numbers, and the symbols "@", ".", and "_". No spaces or other characters are allowed. Your username is **not case sensitive**; "A12B34CD" is the same as "a12b34cd".

Username:

Your password should consist of 8 to 12 characters. Letters and numbers are the only acceptable characters. No spaces or other characters are allowed. Your password is **not case sensitive**; "A12B34CD" is the same as "a12b34cd".

Password:

Verify Password:

[Home](#) | [CME/CEU](#) | [Copyright and Disclaimer](#) | [About Us](#) | [Acknowledgements](#) | [Contact Us](#)

Supply Some Information...

CITI Collaborative Institutional Training Initiative

Name and Email Address

Enter your first name, last name, and preferred email address in the fields below.

First Name:

Last Name:

E-mail:

Your username and password can be sent to you at this address if you forget them. Your email address may also be used by your institution administrator and the CITI site administrator to provide information about the CITI program.

Confirm E-mail:

[Home](#) | [CME/CEU](#) | [Copyright and Disclaimer](#) | [About Us](#) | [Acknowledgements](#)

And More Information...

CITI Collaborative Institutional Training Initiative

Member Information

Please provide the following information requested by **Arkansas Children's Hospital Research Institute**. Required fields are marked with an asterisk.

* Gender:	<input type="text"/>
* Highest degree:	<input type="text"/>
Employee Number:	<input type="text"/>
Department:	<input type="text"/>
* Role in human subjects research:	<input type="text"/>
Address Field 1:	<input type="text"/>
Address Field 2:	<input type="text"/>
Address Field 3:	<input type="text"/>
City:	<input type="text"/>
State:	<input type="text"/>
Zip/Postal Code:	<input type="text"/>

Select Groups - Arkansas Children's Hospital Research Institute

Choose One of These

Question 1 If this is your first time taking a CITI course at Arkansas Children's Hospital Research Institute, choose one learner group below based on your role and the type of human subjects activities you will conduct. You will be enrolled in the Basic Course for that group.

Choose one answer

- Biomedical Research Investigators:** Choose this group to satisfy CITI training requirements for Investigators and staff involved primarily in Biomedical research with human subjects. Choose either Biomedical or Social to Meet IRB Requirements.
- Social & Behavioral Research Investigators:** Choose this group to satisfy CITI training requirements for Investigators and staff involved primarily in Social and Behavioral research with human subjects. Choose either Biomedical or Social to Meet IRB Requirements.
- Incidental Research Contact & Students**
- IRB Members:** This Basic Course is appropriate for IRB or Ethics Committee members.
- Students conducting no more than minimal risk research**
- Reference Resource:** The purpose of this group is for reference only. It should not be selected to achieve CME/CEU eligibility credits or completion reports. You may change your Learner Group status later to "Reference Resource" for ongoing access and resource use of all CITI modules

Question 2 Select the optional CITI Course you would like to take now.

Choose all that apply

- Good Clinical Practice and ICH (GCP) Course**
To take the GCP Course you must have previously completed the Basic Course. If you have NOT completed the CITI Basic Course at Arkansas Children's Hospital Research Institute, Go Back to Question 1.
- Health Information Privacy and Security (HIPS) Course - Information for Students or Instructors**

These are Optional

Question 3 Select a Learner Group for the Responsible Conduct of Research (RCR) Course.

These courses contain text, embedded case studies, and quizzes.

Choose all that apply

- Biomedical Research**
 - Social and Behavioral Research**
 - Physical Science**
 - Humanities**
-

Complete Your Training

Arkansas Children's Hospital Research Institute (ID: 1168)

[View Arkansas Children's Hospital Research Institute instructions page](#)

Your responses to the **Arkansas Children's Hospital Research Institute** enrollment question(s) have established the courses shown immediately below for you to complete. If this is *incorrect* use the "[Add a course or update your learner group](#)" link below to return to the enrollment questions.

[My Courses](#)

Human Research

Status

Not Passed - [Re-enter](#)

Completion Reports

Not Earned

Responsible Conduct of Research

Incomplete - [Re-enter](#)

Not Earned

[Add a course or update your learner groups for Arkansas Children's Hospital Research Institute](#)

Arkansas Children's Hospital Research Institute Learner Utilities

- [Optional Modules](#) (completion is completely voluntary and will not count toward a completed course)
- [Update my profile information for Arkansas Children's Hospital Research Institute](#)
- [Previous Coursework Completed](#)
- [CME/CEU credits for human subjects protection coursework](#)
- [Remove my affiliation from Arkansas Children's Hospital Research Institute](#)

University of Arkansas for Medical Sciences (ID: 943)

[View University of Arkansas for Medical Sciences instructions page](#)

Your responses to the **University of Arkansas for Medical Sciences** enrollment question(s) have established the courses



Questions?